

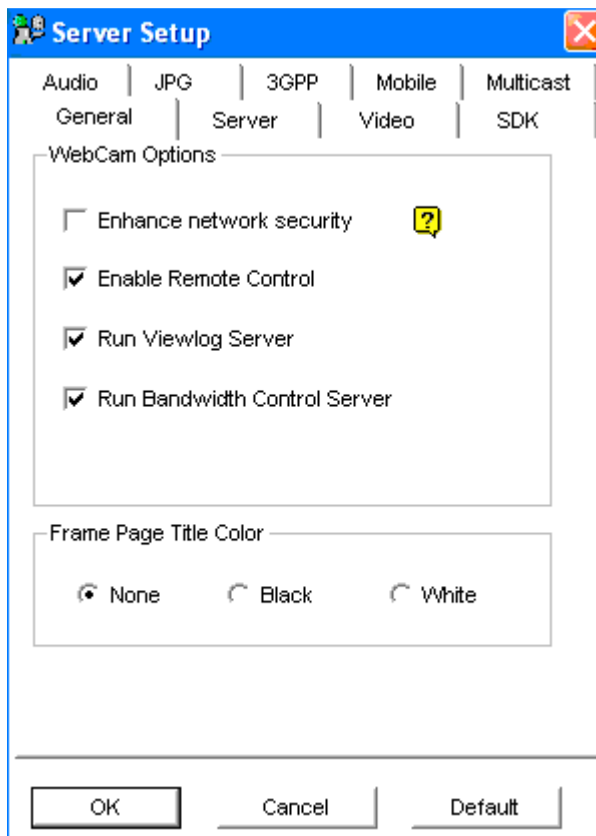
## GeoVision iPhone Remote Viewing Guide

1. Forward the following ports from your firewall to your Geovision Server: **80/TCP (not pictured below), 4550/TCP, 5550/TCP, 5511/TCP, 8866/TCP.**

Security System (1)	8866	8866	TCP
Security System (2)	5511	5511	TCP
Security System (3)	4550	4550	TCP
Security System (4)	5550	5550	TCP


2. Make sure in your Geovision Web Server Setup your screens look identical to the ones pictured below:

### General Tab



## Server Tab

The image shows a 'Server Setup' dialog box with a blue title bar and a close button. The 'Server' tab is selected, indicated by a mouse cursor. The dialog contains several settings:

- Run GeoHTTP Server 
- Enable SSL
- HTTP Port
- Command Port
- Data Port
- 

At the bottom, there are three buttons: 'OK', 'Cancel', and 'Default'.

### 3GPP Tab

The image shows a 'Server Setup' dialog box with a blue title bar and a close button. The '3GPP' tab is selected. A checkbox is checked. The 'RTSP/TCP Port' is set to 8554. 'Max. connections' is set to 20. 'RTP/RTCP/UDP port' is set to the range 17300 - 17380. At the bottom are 'OK', 'Cancel', and 'Default' buttons.

Field	Value
RTSP/TCP Port	8554
Max. connections	20
RTP/RTCP/UDP port	17300 - 17380

## Mobile Tab

**Server Setup**

General | Server | Video | SDK  
Audio | **H.264** | 3GPP | Mobile | Multicast

Port: 8866

Rpb port: 5511

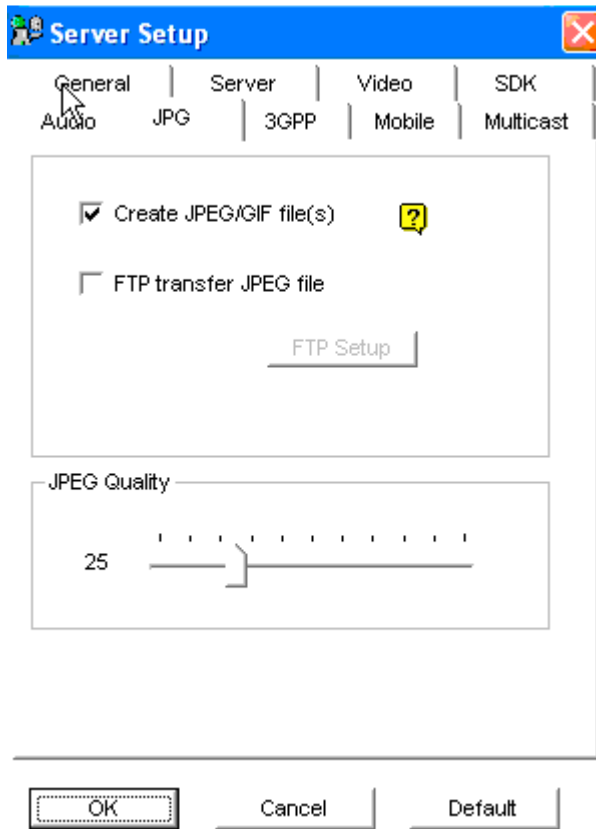
Max. connection: 20

Max. FPS: 10

\*For  
SSViewV3, GViewV2,  
MSViewV2, MSViewV3, BBView

OK Cancel Default

## JPG Tab



- Now on the iPhone app itself enter your info IDENTICALLY to what's below (except of course your IP, username and password. Note the username IS NOT case-sensitive.

AT&T 6:10 PM 38%

### Live View

Done

#### Live Connection Setting

Favorite Name

IP 1.1.1.1

Port 8866

ID User

Password ●●●●●●●●

#### My Favorite

My Favorite >

Live View RPB View

4. Lastly to improve the video quality (this will make no sense and is totally counterintuitive), click on “image setting” and set Image “Normal Quality” to “Off”. It should read “Low-bandwidth Image Quality” or something that makes sense.

