

MultiView MultiHost Setup

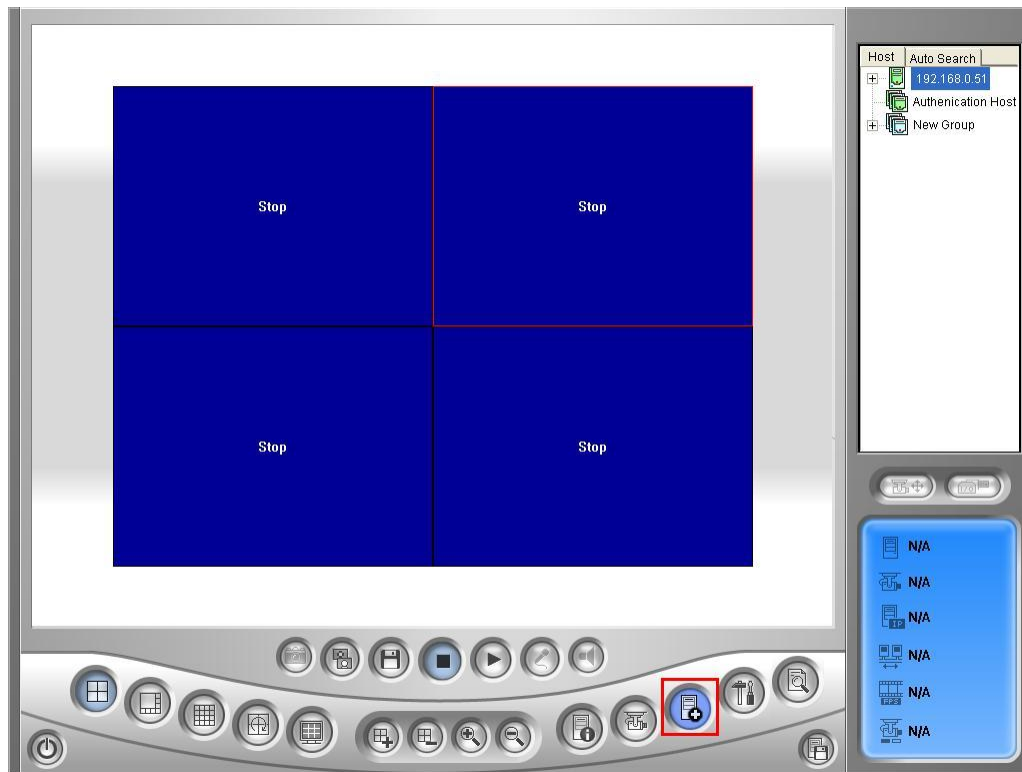
Document ID: C02B1208

Objectives:

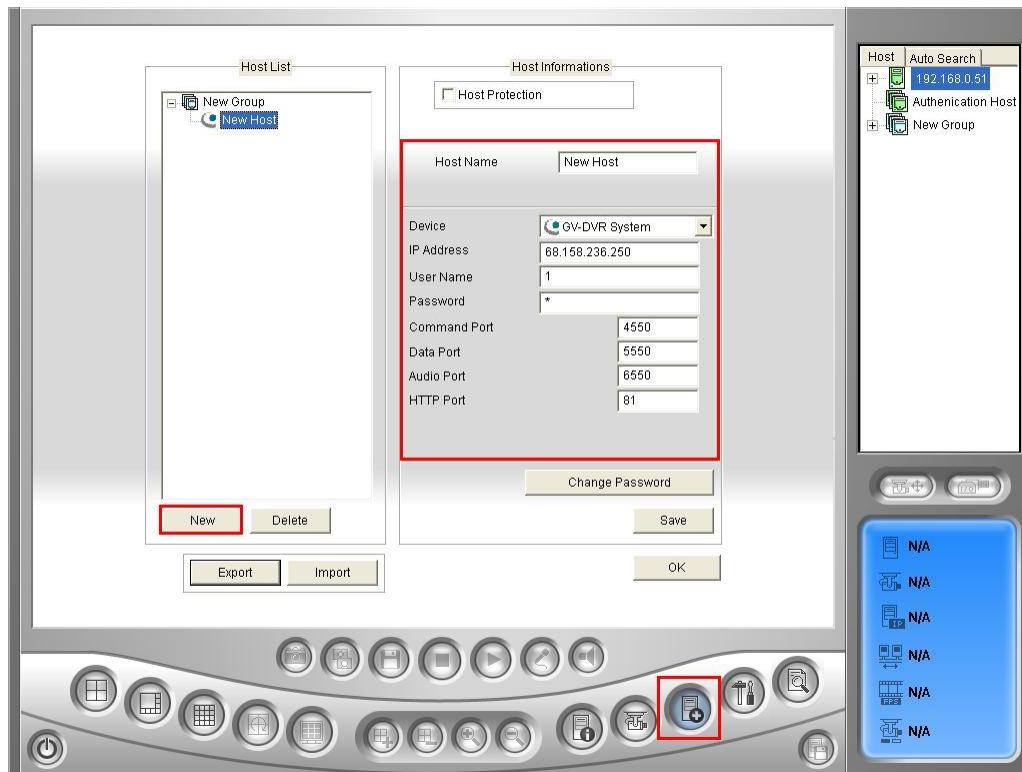
Procedure to set up MultiHost for users to connect to multiple DVRs at once through MultiView

Applicable MultiView version: v8.0 and above

1. In GeoVision MultiView software, click on **Edit Host** button



2. In Edit Host screen, click on **New** button on the under Host List then create a new group. Then click on **New** again to create a new host

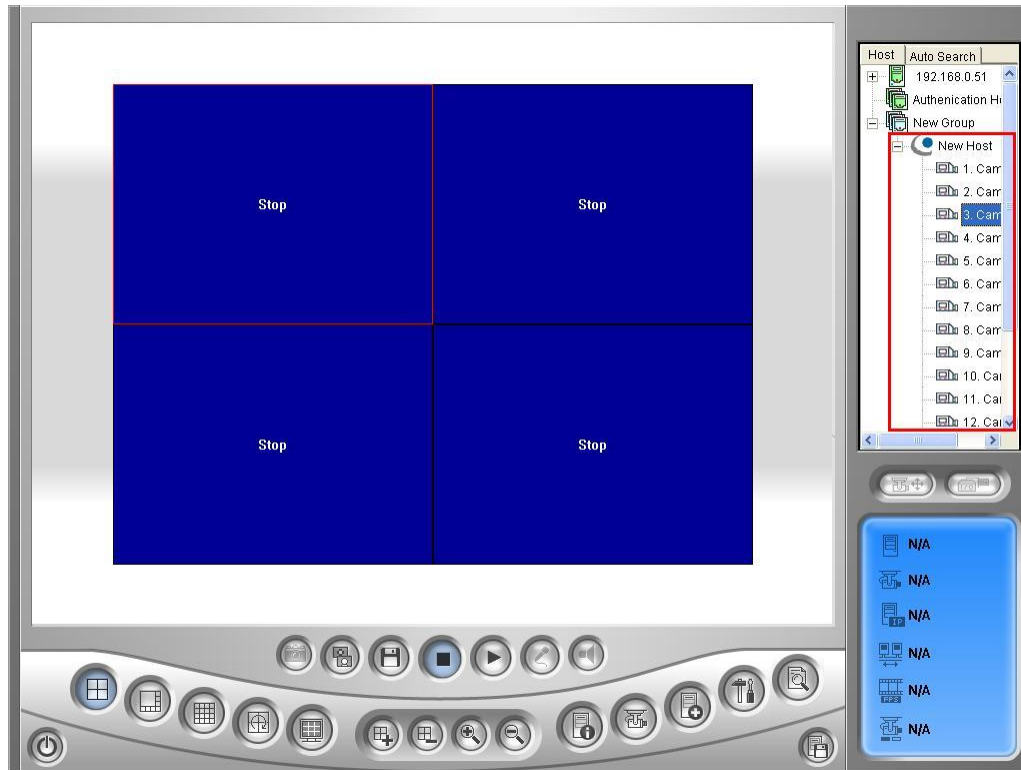


3. Under Host information, type in the **Host Name** of the DVR, then input the **IP address**, **User Name**, and **Password** associated with this DVR

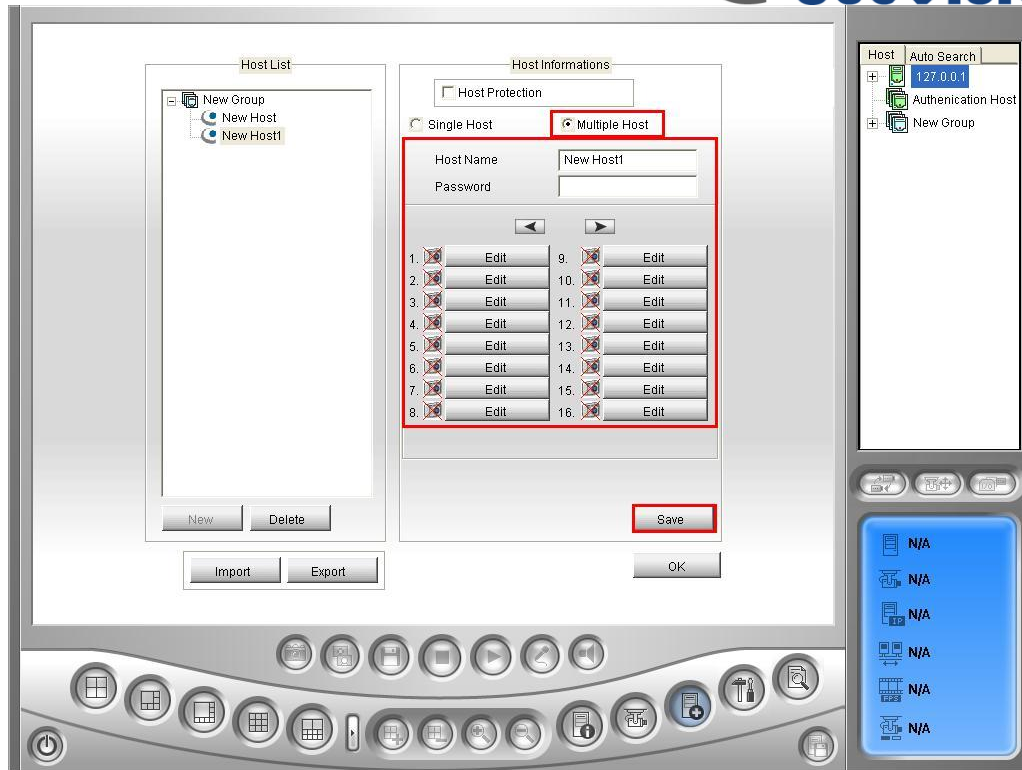
- ✓ Name a “Group” will allow you to identify DVR groups
- ✓ Name a “Host” will allow you to identify individual DVR
- ✓ Confirm Command, Data, Audio, and HTTP ports are correct and the same as the ports used on the DVR

4. Click **Save** to save the host settings

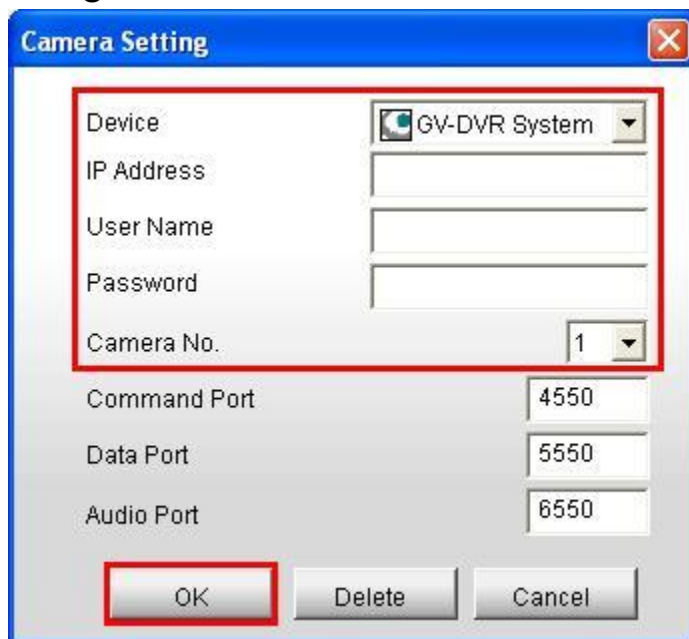
5. Back in the MultiView window, click on the new host that was created then drag any camera from the list to any available channel on the left for live viewing



6. Alternatively, Multiple Host can be created to assign each channel to connect to a specific channel from any DVR by default. After creating a new host as shown in Step 2, select **Multiple Host** option on top. Then, for each of the camera channel listed below, click on **Edit** to enter each channel information



7. In the Camera Setting window, input the **Device type**, **IP address**, **User Name**, **Password**, and **Camera No.** to be assigned to this channel, then select **OK**



8. Click on **Save** then **OK** to save and exit the Host List window
9. After the Multiple Host is created, double click on the host created on the right to bring up each channel as defined in the steps above

